



## MORNING REPORT

Have Good Trading Day

MONDAY



**Price is what you pay.  
Value is what you get.**

- Warren Buffet



## MARKET PULSE

### INDIAN INDICES

NAME	CMP	NET CH.	%
SENSEX	33314.56	+63.63	+0.19
NIFTY	10321.75	+12.80	+0.12

### INDIAN ADR'S

SYMBOL	CLOSE	GAIN/ LOSS %
DRREDDY	35.61	-0.86
HDFCBANK	94.02	-0.69
ICICIBK	9.61	+1.80
INFY	14.64	0
TATA MOTOR	33.09	0
WIPRO	5.03	-0.79

### FII AND MF ACTIVITY

SYMBOL	
FIIs Eq (Provisional)	-529.22
DII's Eq (Provisional)	+1920.87
FIIs Index Future	-1785.08
FIIs Index Options	+30.07
FIIs Stock Future	-124.58
FIIs Stock Options	-544.05

### CURRENCY

CURERNCY	RBI RATE
RUPEE - \$	65.0147
EURO	75.7356
YEN 100	57.3400
GBP	85.5463

## TOP STORY

- Reliance - Jio looking to refinance USD 1.5 billion of overseas debt
- Differences with lenders may hit RCom's SDR plan
- ONGC expects first oil from KG basin in 2020 and gas by 2019
- IPCA Labs wins order for supply of anti-malarial medicines by the Global Fund Pooled Procurement Mechanism
- HSIL approves plan for demerger of retail and building products businessWelspun Enterprises signs agreement with NHAI for expansion of a section of NH-31 at a project cost of Rs 1,161 crore
- GST- 28 percent Tax Bracket Pruned Down To 50 Items
- PSBs A Major Player In Support To Agri, Infra, Industry, Financial InclusionNot Only Do We Need PSBs, We Need Healthy PSBs Govt Has Now Decided To Put In More Capital Into Banking System
- Govt plans Rs 3.6k-crore subsidy to telcos for BharatNet

## MARKET PULSE

### GLOBAL INDICES

NAME	CMP	NET CH.	%
DOW	23422.21	-39.73	-0.17
NASDAQ	6750.94	+0.89	+0.01
NIKKEI	22543.50	-137.92	-0.61
HANG SENG	29180.00	+28.58	+0.09
SGX NIFTY	10334.50	+7.50	+0.07

### WORLD COMMODITIES

FUTURE	CMP	%
CRUDE	56.81	+0.12
NATURAL GAS	3.167	-1.65
GOLD	1276.58	+0.19
SILVER	16.905	+0.20
COPPER	3.086	+0.39

### WORLD EVENTS

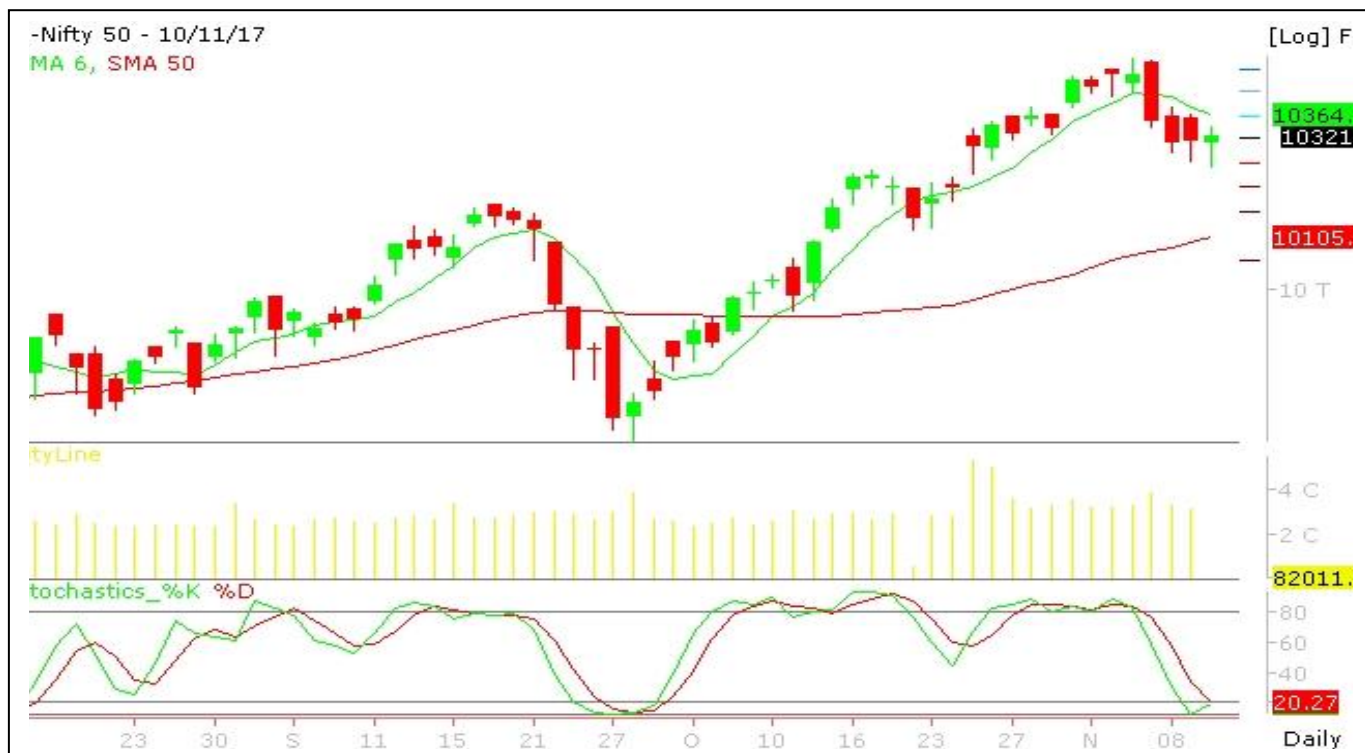
**USD** : FOMC Member Harker Speaks  
**JPY** : BOJ Gov Kuroda Speaks

### RESULT TODAY

AARTIDRUGS, ADANIENIT, ADANI PORTS,  
 APOLLOHOSP, DHANUKA, EMKAY,  
 GAMMNIINFRA, GILLETTE,



## NIFTY CHART



## MARKET COMMENTARY

The Sensex rose 63.63 points or 0.19% to settle at 33,314.56, its highest closing level since 7 November 2017. The index rose 129.49 points, or 0.39% at the day's high of 33,380.42. The index fell 142.84 points, or 0.43% at the day's low of 33,108.09.

The Nifty 50 index rose 12.80 points or 0.12% to settle at 10,321.75, its highest closing level since 7 November 2017. The index rose 36 points, or 0.35% at the day's high of 10,344.95. The index fell 54.85 points, or 0.53% at the day's low of 10,254.10.

Among secondary barometers, the BSE Mid-Cap index fell 0.09%. The BSE Small-Cap index rose 0.07%. Both these indices underperformed the Sensex.

The market breadth, indicating the overall health of the market, was negative. On BSE, 1,504 shares fell and 1,193 shares rose. A total of 144 shares were unchanged. The breadth alternately swung between positive and negative so far during the day.

Nifty likely to trade in the range of 10010-10619.

### MARKET LEVELS

	CMP	SUPPORT LEVELS				RESISTANCE LEVELS			
NIFTY	10321	10268	10216	10126	10036	10358	10396	10486	10576
USDINR	65.355	65.22	65.08	64.84	64.61	65.45	65.54	65.78	66.01





#### BULK DEALS (BSE)

SCRIP	CLIENT NAME	BUY/SELL	QUANTITY	PRICE
ASHIKACR	KAMAL KAMAL	S	54,232	27.42
CILSEC	SUSHMA JAIN	S	28,968	30.88
DWEKAM	SANJEEV BURMAN JHAVERI	S	185,993	10.76
SORILHOLD	KUBER INDIA FUND	B	276,181	140.8
VAL	OVERSKUD MULTI ASSET MANAGEMENT PRIVATE LIMITED	S	248,000	26.98

#### BULK DEALS (NSE)

SCRIP	CLIENT NAME	BUY/SELL	QUANTITY	PRICE
BANSAL	ASHISH HARIVADAN PANDYA	SELL	40000	109.1
BRNL	AUM COMMODITY SERVICES PRIVATE LIMITED	SELL	1052000	182.53
SIKKO	SHAH BIJAL MUKESH	SELL	40000	38
JUSTDIAL	ALPHAGREP COMMODITIES PRIVATE LIMITED	BUY	1660478	507.75
HATSUN	DSP BLACKROCK MUTUAL FUND	BUY	1890000	735

#### SCRIP'S IN F&O BAN

(To resume for normal trading below 80% of market wide limit required)

JSWENERGY, RCOM, HDIL, IBREALEST, DHFL, INFIBEAM, JETAIRWAYS, INDIACEM, JISLJALEQS, JUSTDIAL

#### Initial Public Offering (IPO)

Company Name	Security type	Issue Start Date	Issue End Date	Status



### NIFTY 50 STOCKS: SUPPORT & RESISTANCE

Symbol	Close	Support 1	Support 2	Pivot Point	Resistance1	Resistance2
ACC	1754	1741	1728	1758	1771	1788
ADANI PORTS	432	427	422	431	436	441
AMBUJACEM	270	268	265	271	273	276
ASIANPAINT	1179	1161	1143	1178	1196	1213
AUROPHARMA	740	712	684	758	786	832
AXISBANK	545	535	526	542	552	559
BAJAJ-AUTO	3253	3198	3143	3237	3292	3330
BANKBARODA	170	165	159	169	174	179
BHARTIARTL	503	496	489	504	511	519
BHEL	93	91	90	92	93	94
BOSCH LTD	20457	20082	19707	20630	21005	21554
BPCL	512	508	504	512	516	520
CIPLA	609	601	594	611	619	629
COALINDIA	284	279	274	283	289	293
DRREDDY	2348	2332	2316	2356	2372	2396
EICHERMOT	30552	30303	30054	30619	30868	31184
GAIL	457	450	444	457	464	471
HCLTECH	867	860	852	870	878	888
HDFC	1710	1696	1682	1711	1725	1740
HDFCBANK	1822	1811	1801	1823	1834	1846
HEROMOTOCO	3605	3566	3526	3600	3640	3675
HINDALCO	264	261	258	264	267	270
HINDUNILVR	1291	1257	1223	1278	1312	1333
ICICIBANK	319	312	305	318	325	331
IDEA	97	95	94	97	99	100
INDUSINDBK	1660	1650	1639	1661	1672	1684
INFRA TEL	427	421	416	427	432	438
INFY	962	953	944	959	968	973
ITC	262	259	256	262	265	268
KOTAKBANK	993	986	979	997	1005	1016
LT	1265	1230	1194	1252	1288	1310
LUPIN	833	827	821	837	843	852
M&M	1393	1356	1319	1384	1421	1449
MARUTI	8184	8118	8053	8176	8242	8300
NTPC	177	175	174	177	178	180
ONGC	191	189	186	191	193	195
POWERGRID	211	208	204	210	213	215
RELIANCE	884	875	866	888	897	910
SBIN	334	316	298	327	345	356
SUNPHARMA	528	523	518	529	533	539
TATAMOTORS	423	415	408	427	434	446
TATAMTRDVR	241	237	232	244	248	255
TATAPOWER	83	82	81	83	84	85
TATASTEEL	702	696	689	702	709	715
TCS	2709	2693	2677	2709	2725	2742
TECHM	491	484	477	491	498	505
ULTRACEMCO	4451	4364	4276	4427	4515	4578
VEDL	324	319	314	323	328	332
WIPRO	303	299	296	302	305	307
YESBANK	304	301	297	305	309	313
ZEEL	543	509	475	528	562	581



## NSE CIRCULARS

**NSE Download Ref No. : NSE/CML/36270:** Exclusively listed companies of De-recognized/Non-operational/exited Stock Exchanges placed in the Dissemination Board (DB)Centres w.e.f. November 09,  
**NSE Download Ref No. : : NSE/CML/36272:** Listing of Equity Shares of Khadim India Limited(IPO)) w.e.f. November 14, 2017

**NSE Download Ref No. : NSE/CML/36276:** Listing of Equity Shares of The New India Assurance Company Limited (IPO)w.e.f. November 13, 2017

**NSE Download Ref No : : NSE/CML/36283:** Listing of Equity Shares of IFGL Refractories Limited (earlier known as IFGL Exports Limited) pursuant to the Scheme of Amalgamation w.e.f. November 14, 2017

**NSE Download Ref No. : NSE/CD/36281:** Interest Rate Futures contracts on 13-yr Maturity Bucket Government of India (GOI) security) w.e.f. November 13, 2017.

**NSE Download Ref No. : NSE/CML/36278 :** Listing of Equity Shares of SecUR Credentials Limited (SME IPO) w.e.f. November 13, 2017.

**NSE Download Ref No. : NSE/CMTR/36277:** Change of Market Maker for M/s Supreme (India) Impex Ltd (SIIL) w.e.f. November 20, 2017

## BOARD MEETINGS/ CORPORATE ACTION

COMPANY NAME	DATE	PURPOSE
LTI	13-Nov-17	Interim Dividend - Rs 8/- Per Share (Purpose Revised)
SUNDRMFAST	13-Nov-17	Interim Dividend - Rs 1.90 Per Share
GPPL	13-Nov-17	Interim Dividend - Rs 1.70 Per Share
SHRIRAMCIT	14-Nov-17	Interim Dividend - Rs 6/- Per Share
LTTS	14-Nov-17	Interim Dividend - Rs 4/- Per Share (Purpose Revised)
KITEX	16-Nov-17	Interim Dividend - Re 0.75 Per Share
HARITASEAT	16-Nov-17	Interim Dividend
HESTERBIO	16-Nov-17	Interim Dividend
BALKRISIND	16-Nov-17	Interim Dividend - Rs 2.50 Per Share (Purpose Revised)
GDL	16-Nov-17	Interim Dividend
BHARATFORG	16-Nov-17	Interim Dividend Rs 2/- Per Share
DCMSHRIRAM	16-Nov-17	Interim Dividend - Rs 4/- Per Share
NILKAMAL	16-Nov-17	Interim Dividend
AMRUTANJAN	16-Nov-17	Interim Dividend
GABRIEL	16-Nov-17	Interim Dividend
MANAPPURAM	16-Nov-17	Interim Dividend - Re 0.50 Per Share
PAGEIND	16-Nov-17	Interim Dividend
MENONBE	16-Nov-17	Interim Dividend
SUNTV	17-Nov-17	Interim Dividend
ASTRAL	20-Nov-17	Interim Dividend
SONATSOFTW	20-Nov-17	Interim Dividend



## NEWS & RUMOURS:

- **Gold (Spot Dollar) major support = \$1245/\$1220 & Resistance = \$1302/\$1332.**
- **Crude oil range->\$51 to \$61.**
- **Stocks Extend Decline as Health Care Shares Plunge: Markets Wrap:**
  - Stocks and bonds sold off around the world, with U.S. equities poised to halt a streak of eight straight weekly gains, as a bout of volatility returned to global financial markets awash in uncertainty.
- **Forex - Dollar Hits Fresh 1-Week Low as Tax Reform Weighs, Consumer Data Misses:** - The dollar hit a fresh one-week low against other major currencies on Friday, as concerns over the fate of a highly-anticipated U.S. tax reform bill continued to dampen demand for the greenback and an unexpected drop in U.S. consumer sentiment dampened optimism.
- **Crude Oil Prices Hold Steady Ahead of U.S. Shale Production Data:** - Crude oil prices held ground in early morning trade on Friday ahead of U.S. weekly rig count data that showed a dip in the previous week, but also with a sharp eye on the Middle East as tensions between Iran and Saudi Arabia, key OPEC members, simmer.
- **Gold Slips Lower on Profit-Taking, Eyes on U.S. Tax Reform:** - Gold prices slipped lower on Friday, as traders locked in profits from the precious metal's rally to three-week highs in the previous session, boosted by U.S. political concerns and thus a softer dollar. U.S. Senate Republicans unveiled a plan on Thursday which would reduce the corporate tax rate to 20% from 35% and make other significant changes to the individual tax system. However, sentiment on the greenback remained fragile as Senate Republican leaders said they were considering postponing the implementation of the major corporate tax cut until 2019.

## TRENDS & OUTLOOK – DATE: 13-Nov- 2017

### PRECIOUS METALS:

COMMDITY (MCX)	S2	S1	PIVOT POINT	R1	R2
GOLD (Dec)	28975	29210	29570	29865	30130
SILVER (Dec)	37500	38400	39600	40786	41970

### BASE METALS

COMMDITY (MCX)	S2	S1	PIVOT POINT	R1	R2
COPPER (Nov)	432	438	444	452	460
ZINC (Nov)	206.10	209.50	212.25	216.55	220.50
LEAD (Nov)	157.10	160.45	165.25	169.45	172.90
NICKEL (Nov)	748	775	801	834	857

### ENERGY

COMMDITY (MCX)	S2	S1	PIVOT POINT	R1	R2
CRUDE OIL (Nov)	3460	3575	3711	3845	3970
NATURAL GAS (Nov)	199	203	209	215	221

### DATA TALKS : TODAY'S ECONOMIC DATA :

FOMC Member Harker Speaks, Mortgage Delinquencies.





LET THE  
WOMAN  
POWER RISE

**WOMEN  
DESK**

All the Ladies in the house are  
cordially invited to come  
& explore their trading talents.

**TOLL FREE: 18001030059**



# SIP CALCULATOR

Calculates the  
Future Value  
of an  
Investment



SIP Amount (Rs.)  
**10,000**



Investment Frequency  
**Monthly**



Expected Return (p.a.)  
**14.00%**

Year	Principal (Rs.)	Future Value (Rs.)	Appreciation
1	120,000	128,918	8,918
2	240,000	275,884	35,884
3	360,000	443,426	83,426
4	480,000	634,423	154,423
5	600,000	852,161	252,161
10	1,200,000	2,492,923	1,292,923
15	1,800,000	5,652,071	3,852,071
20	2,400,000	11,734,741	9,334,741
25	3,000,000	23,446,403	20,446,403
30	3,600,000	45,996,206	42,396,206
35	4,200,000	89,413,927	85,213,927
40	4,800,000	173,011,040	168,211,040
45	5,400,000	333,970,140	328,570,140
50	6,000,000	643,883,137	637,883,137



**Indira Securities Pvt. Ltd**

Member: NSE, BSE, CDSL

**Indira Commodities Pvt. Ltd.**

Member: MCX, NCDEX

Head Office: 'Ramavat House', E-15, Saket Nagar, Indore-452018

Customer Care No.: 4097170-173, 93031-72345 | [customercare@indiratrade.com](mailto:customercare@indiratrade.com) | [www.indiratrade.com](http://www.indiratrade.com)

**Registered Office**

Indira House, 3rd Floor, 5 Topiwala Lane,  
Opp. Lemington Road Police Station, Grant Road (East), Mumbai - 400007.

**Corporate Office**

'Ramavat House' E-15, Saket Nagar, Indore - 452018 (M.P.)

**Customer Care**

Tel: +91-731-4097170/ 71/ 72/ 73/ 74 M. +91 93031 72345  
Email: [customercare@indiratrade.com](mailto:customercare@indiratrade.com) [www.indiratrade.com](http://www.indiratrade.com)

**INSTITUTIONAL DEALING UNIT**

**Africa House**, 5, Topiwalla Lane, Lamington Road, Mumbai, 400007

Tel: +91 2230080678; Email: [ie@indiratrade.com](mailto:ie@indiratrade.com)

**Disclaimer**

This report is for private circulation within the Indira Group. This report is strictly confidential and for information of the selected recipient only and may not be altered in any way, transmitted to, copied or distributed, in part or in whole, to any other person or to the media or reproduced in any form. This report should not be construed as an offer or solicitation to buy or sell any securities or any interest in securities. It does not constitute a personal recommendation or take into account the particular investment objectives, financial situations, or any such factor. The information, opinions estimates and forecasts contained here have been obtained from, or are based upon, sources we believe to be reliable, but no representation of warranty, express or implied, is made by us to their accuracy or completeness. Opinions expressed are our current opinions as of the date appearing on this material only and are subject to change without notice.